

# The Hatters Explorer Scout Unit



The Hatters ESU





**The Hatters ESU**

# **What we do...**

- **King's Scout Award**
- **DofE**
- **Skills for life**
- **Young Leaders**
- **Explorers design the programme**
- **Young people have a voice and an opportunity to grow**
- **Unwind and forget about school pressures**

# Explorer Scouting is what you make of it...



**The Hatters ESU**

- **Nobody is expected to attend everything, you'll have other priorities to juggle over the next few years.**
- **The Hatters meet on a Monday night from 7:30 to 9:30, usually at the Royal British Legion Building in Southgate (N14 5QD), 11<sup>th</sup> Southgate Scout Hut in Cockfosters, Trent Park, Scout Park in Bounds Green, or sometimes 6<sup>th</sup> Southgate Scout Hut in Walker Cricket Ground at weekends.**
- **Our subs are an annual subscription that we split over 11 monthly payments. The subs cover the rent that we pay for meeting spaces, programme materials, administrative costs and the biggest chunk is insurance and the cost we pay to the Scout Association to register each member for the year. Subs are £148.50 per year, £13.50 per instalment.**
- **Young Leader training is on the 1<sup>st</sup> Tuesday every month and DofE is on the 3<sup>rd</sup> Tuesday every month – these are held at the 6<sup>th</sup> Southgate Scout hut in Walker Cricket Ground (N14 7JZ)**
- **DofE meetings are on the 3<sup>rd</sup> Tuesday every month at the same location**
- **Our explorer unit is run by the young people, there is a council of explorers making decisions, a group who manage all social media and we keep them involved in every decision**

**\*we make a commitment to all young people that nobody should miss out on anything as a result of not being able to pay money towards it – sometimes the solutions are straightforward, sometimes more complicated but always talk to me because we'll try to get over any hurdle!**



How we do it...



Unforgettable  
memories





Helping remote communities on the other side of the world...





Volunteering in our local community



Invitations to participate in once in a lifetime events; Royal Commonwealth Service and Trooping of the Colour





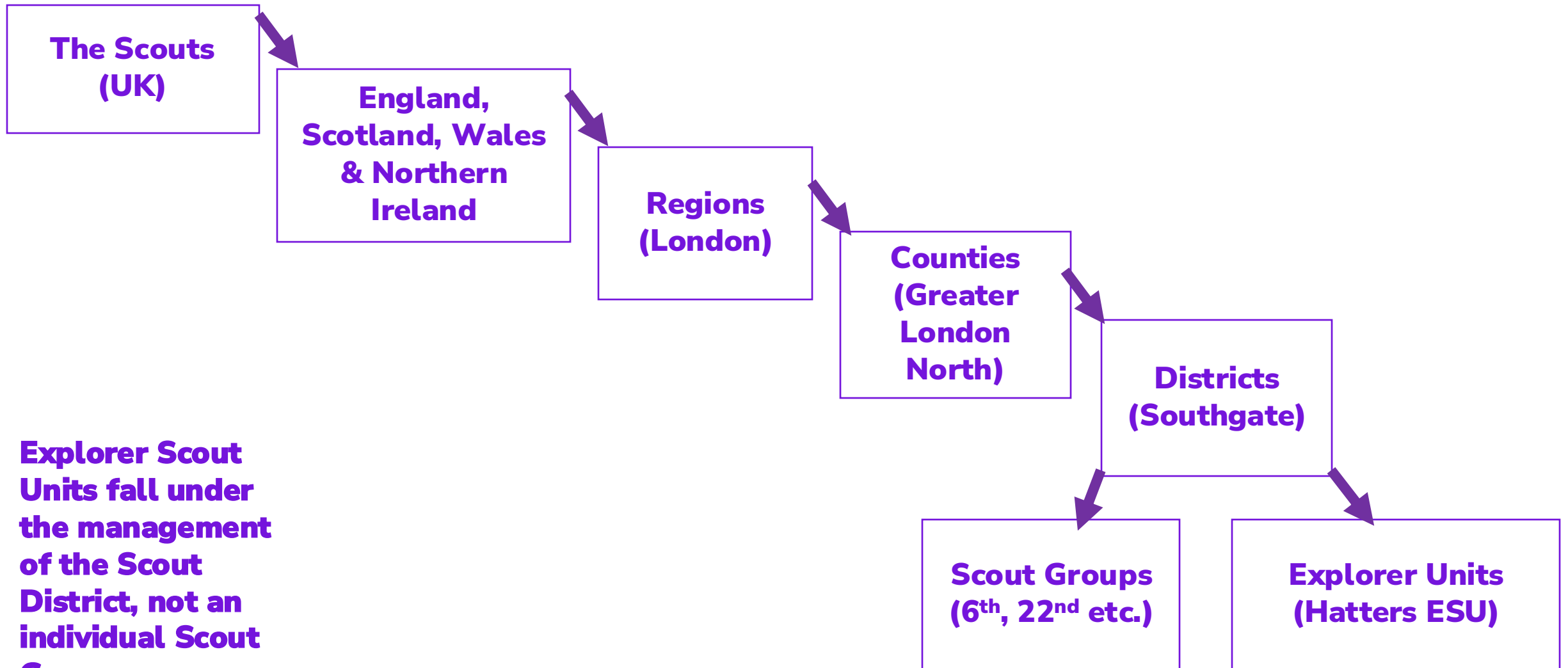
Working towards King's Scout Awards  
& always pushing ourselves to  
achieve more



# How the Structure works and how Explorer Units differ to Scout Groups

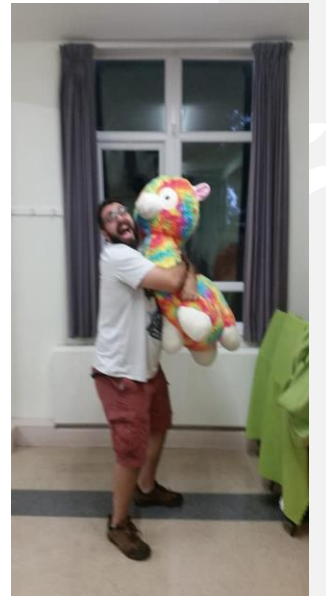
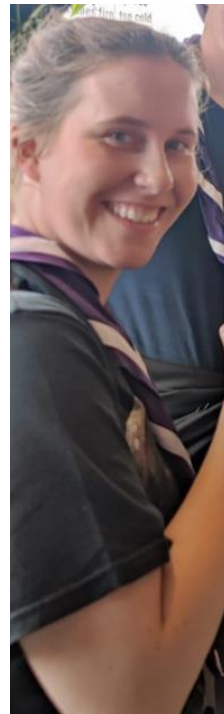
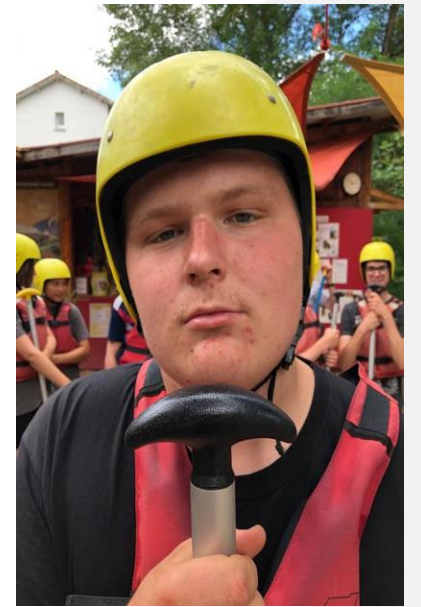


The Hatters ESU



**Explorer Scout Units fall under the management of the Scout District, not an individual Scout Group.**

# Our Leader Team!





**The Hatters ESU**

## **Our Summer Camps to date:**

**2008 – Ireland**

**2009 – Denmark**

**2010 – Wales**

**2011 – Namibia**

**2012 – Denmark**

**2013 – Northumberland**

**2014 – Namibia**

**2015 – Netherlands**

**2016 – Austria**

**2017 – Scotland**

**2018 – Peru**

**2019 – South of France**

**2021 – Peak District**

**2022 – Ireland**

**2023 – Postponed Himalaya Expedition**

**(originally 2022)**

**2023 – Netherlands (end of August)**

**2024 – Jurassic Coast and Devon**

## **What's to come:**

**2025 – Lake District**

**2026 – East Africa Expedition**

**2026 – Netherlands (end of August)**

**2027 – North Wales (TBC)**

**2028 – Europe (TBC)**

**2029 – UK (TBC)**

**2030 – South America (TBC)**



**If you're interested then please don't hesitate to reach out to me, Dan Ingle (Explorer Scout Leader at the Hatters Explorer Scout Unit).**

**[hatters.esu@gmail.com](mailto:hatters.esu@gmail.com) / 07977 185981**

**For more information on the Hatters, visit <https://hattersesu.com> or check our social media:**

**<https://www.facebook.com/hattersesu>**

**<https://www.instagram.com/hattersesu/?hl=en>**

